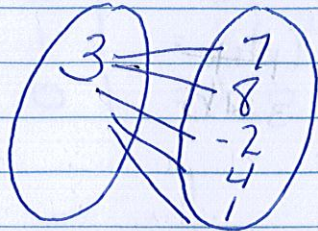


PG. 271 8, 10, 12-16, 18-24 even
32.

8. $\{(3,7), (3,8), (3,-2), (3,4), (3,1)\}$
 Domain is x value. $\{3\}$
 RANGE is y VALUE
 $\{-2, 1, 4, 7, 8\}$

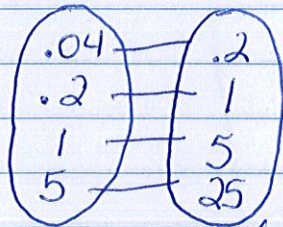


No to Function
CAN ONLY 1

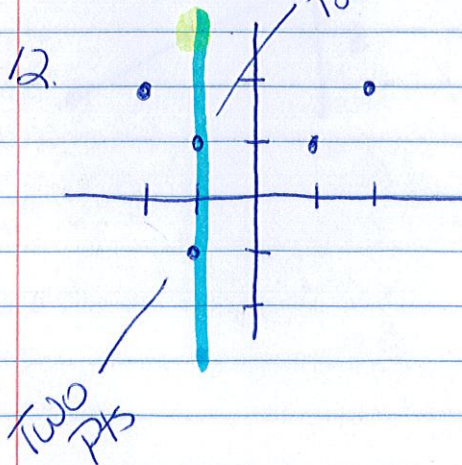
10. $\{(0.04, 0.2), (0.2, 1), (1, 5), (5, 25)\}$

Domain $\{0.04, 0.2, 1, 5\}$

RANGE $\{0.2, 1, 5, 25\}$



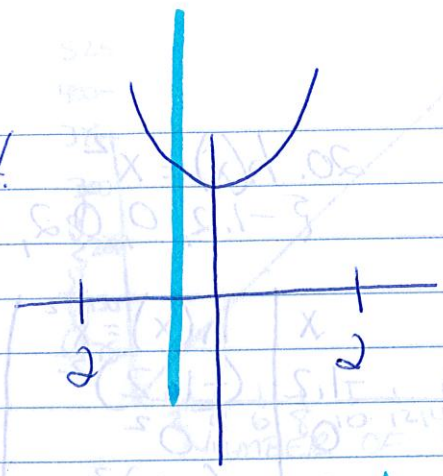
yes EACH
X HAS A
Y VALUE



DOES NOT PASS
VERTICAL LINE TEST

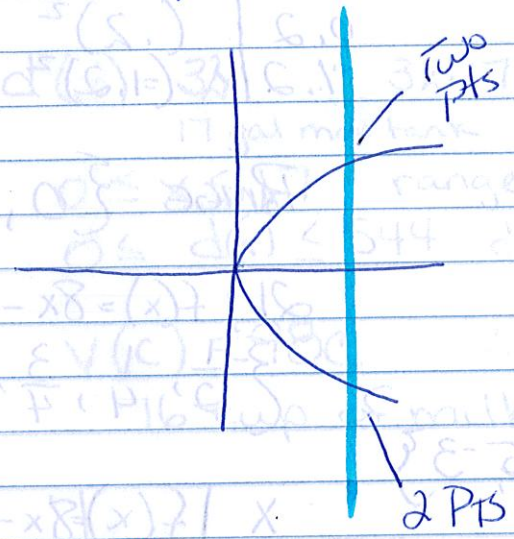
NOT A FUNCTION

14.



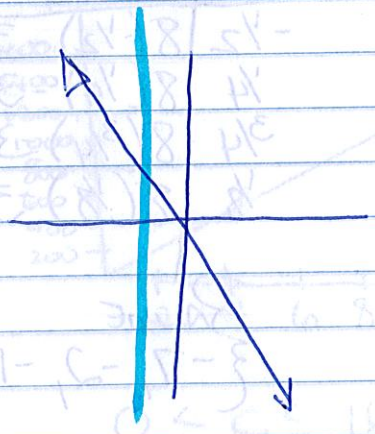
IT IS A FUNCTION
BECAUSE IT PASSES
THE VERTICAL LINE
TEST.

13.



NOT A FUNCTION
DOES NOT PASS
VERTICAL LINE
TEST

15.



FUNCTION IT PASSES
VERTICAL LINE TEST

16. $d(t) = 186,000t$
 $d = \text{distance}$
 $t = \text{seconds}$

$$186,000(30) = 5,580,000$$

18. $f(x) = 2x - 7$
 $\{-2, -1, 0, 1, 2\}$

x	y = 2x - 7	
-2	2(-2) - 7 = -11	-11
-1	2(-1) - 7 = -10	-9
0	2(0) - 7 = -7	-7
1	2(1) - 7 = -5	-5
2	2(2) - 7 = -3	-3

RANGE $\{-11, -10, -7, -5, -3\}$

19. $g(x) = -4x + 1$
 $\{-5, -1, 0, 2, 10\}$

x	$g(x) = -4x + 1$	$g(x)$
-5	-4(-5) + 1	21
-1	-4(-1) + 1	5
0	-4(0) + 1	1
2	-4(2) + 1	-7
10	-4(10) + 1	-39

RANGE $\{-39, -7, 1, 5, 21\}$

20. $h(x) = x^2$
 $\{-1.2, 0, 0.2, 1.2, 4\}$

x	$h(x) = x^2$	$h(x)$
-1.2	$(-1.2)^2$	+1.44
0	0^2	0
0.2	$(.2)^2$.04
1.2	$(1.2)^2$	1.44

RANGE $\{0, .04, 1.44, 16\}$

21) $f(x) = 8x - 3$

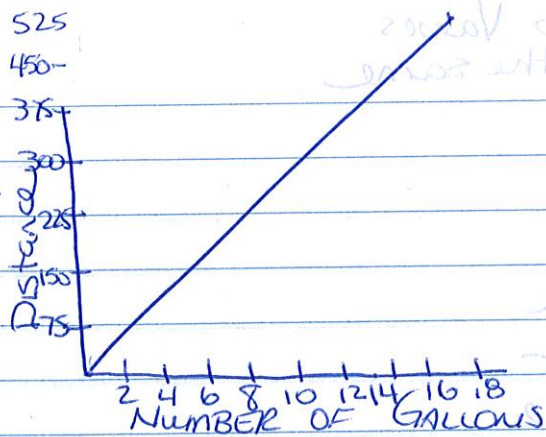
$$\left\{ \frac{1}{2}, \frac{1}{4}, \frac{3}{4}, \frac{1}{8} \right\}$$

x	$f(x) = 8x - 3$	$f(x)$
$\frac{1}{2}$	$8(\frac{1}{2}) - 3$	-1
$\frac{1}{4}$	$8(\frac{1}{4}) - 3$	-1
$\frac{3}{4}$	$8(\frac{3}{4}) - 3$	3
$\frac{1}{8}$	$8(\frac{1}{8}) - 3$	-2

RANGE

$\{-7, -2, -1, 3\}$

22.



$$d(x) = 32x \quad \therefore 32 \cdot 17 = 544$$

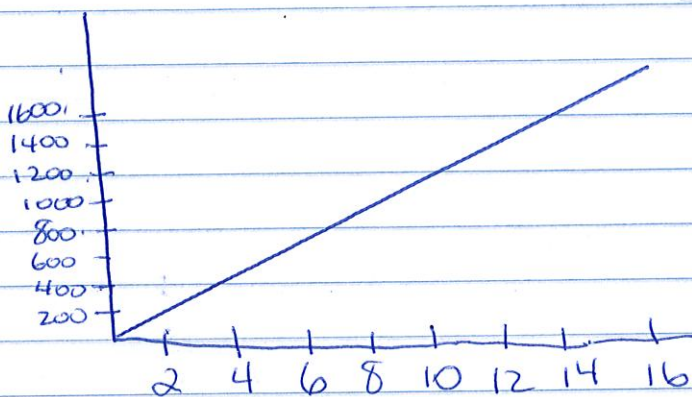
17 gal max tank

$$0 \leq x \leq 17 \quad \text{range}$$

$$0 \leq d(x) \leq 544 \quad \text{domain}$$

23, $v(c) = 98c \quad \therefore 98 \times 16 = 1568$

16 cup of milk



$$0 \leq c \leq 16 \quad \text{Domain}$$

$$0 < v(c) \leq 1568 \quad \text{Range}$$

Two Values
the same

24. x 0 3 3 5
 y 2 1 -1 3

Not A Function
Two Values for
 x can not be
the same.

32 $\{(b,b), (c,d), (d,e), (c,a)\}$

Not A Function
Two Values for
 x can not be
the same