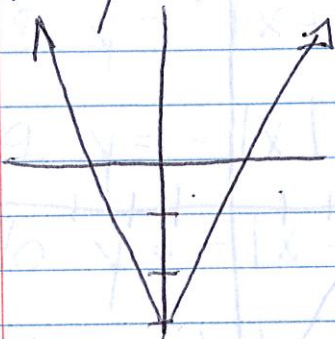


Pg. 345

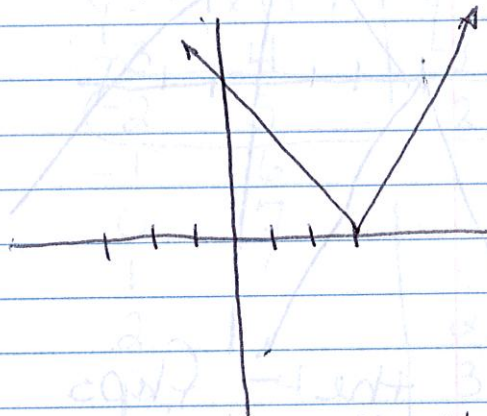
9, 10, 21, 23, 33-42, 44-47

9) $y = |x| - 3$



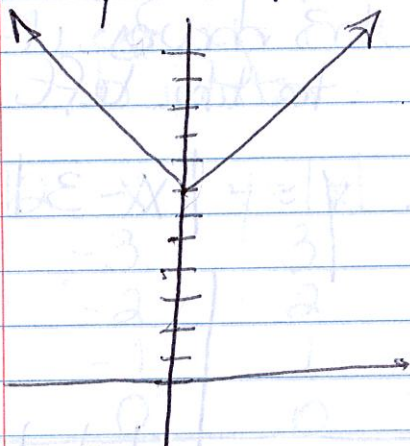
-3 means move
down 3

21. $y = |x - 3|$



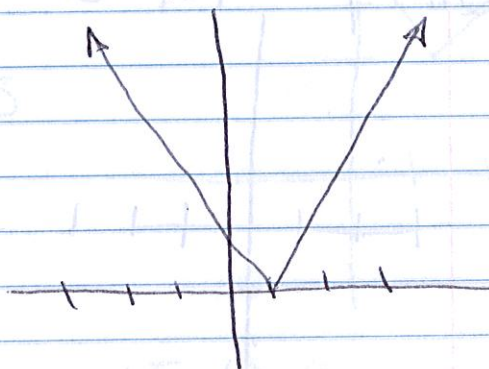
-3 inside ||
move to right 3

10 $y = |x| + 7$



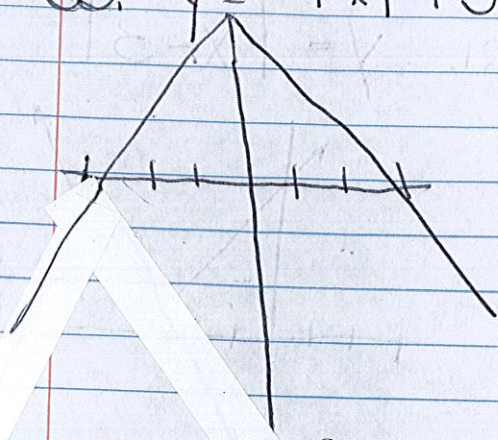
+7 move
up 7

23. $y = |x - 1|$



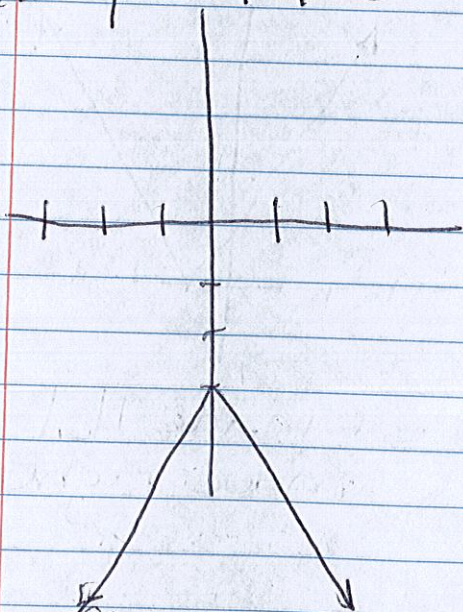
-1 inside ||
move right 1

$$33. y = -|x| + 3$$



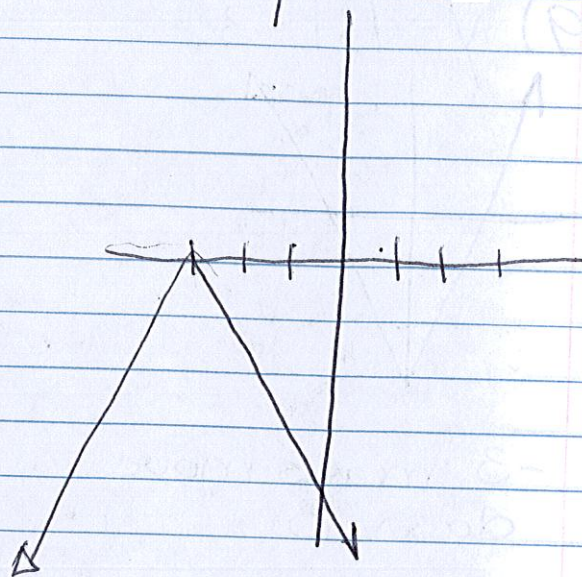
the - flips
the graph
+ 3 moves
it up 3

$$34. y = -|x| - 3$$



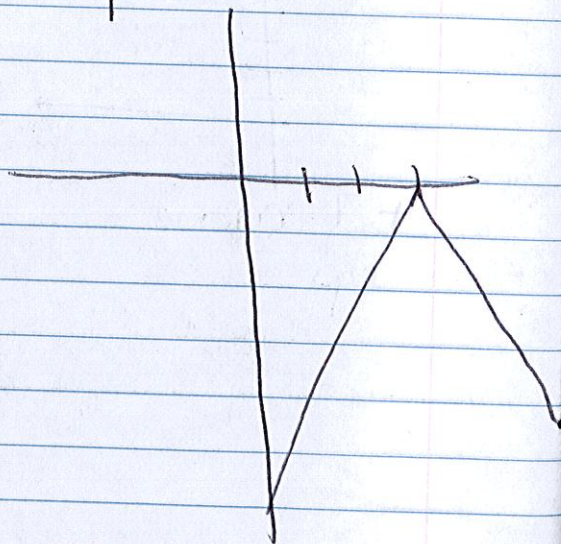
- flips the
graph - 3
moves down

$$35. y = -|x + 3|$$



- flips the graph
+ 3 moves it
to the left

$$36. y = -|x - 3|$$



37. $y = -|x| + 2$

44. $(-2, 5)$ $(5, 2)$

38. $y = -|x + 2.25|$

$y = - x + 7$	$y = x - 3 $
-3 4	-3 6
-2 5	-2 5
-1 6	-1 4
0 7	0 3
1 6	1 2
2 5	2 1
3 4	3 0
4 3	4 1
5 2	5 2

39. $y = -|x| - 15$

40. $y = -|x - 4|$

41. $y = |x| + k$ is a translation of $y = |x|$ up k units. $y = mx + b$ is a translation of $y = mx$ up b units.

45

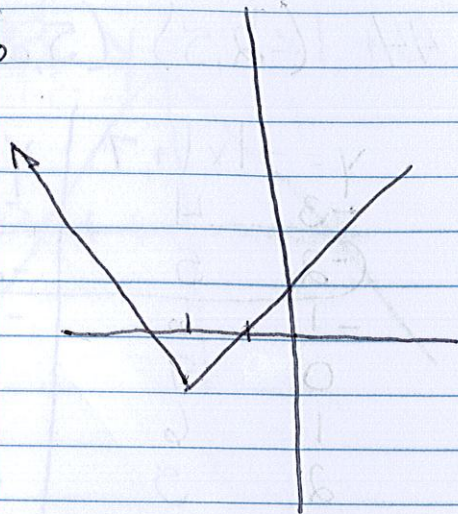


42	x	$y = x $	$y = x + 5$
	-3	3	8
	-2	2	7
	-1	1	6
	0	0	5
	1	1	6
	2	2	7
	3	3	8

Each value of $y = |x| + 5$ is 5 more than the corresponding y -value of $y = |x|$

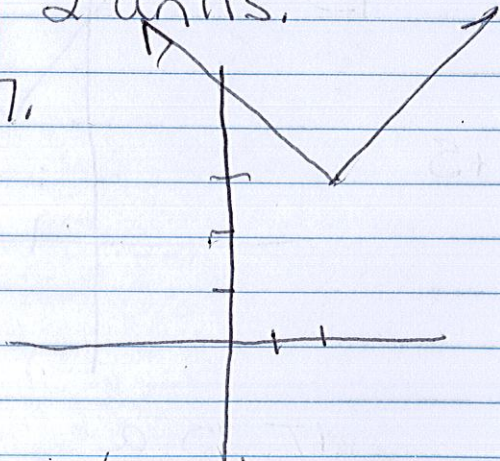
It is a translation of $y = |x|$ up 2 units and right 1 unit

46.



It is a translation
of $y = |x|$ down 1
unit and left
2 units.

47.



$b(2, 3)$

c. The

x coordinate is
the horizontal
translation and
the y-coordinate

is the vertical translation (h, k)